



ZENO[®]
Tec System

Patient information

Full Ceramic Restorations
for a beautiful smile

WIELAND
Dental Division

The material zirconium oxide

■ Zirconium oxide

Zirconium dioxide is a high strength ceramic material, which is used for high-tech applications, e.g. in the aerospace industry. It is a chemical compound of the rare element zirconium and oxygen.

Its chemical formula is ZrO_2 . It is often referred to as zirconium oxide or zircon oxide.

■ ZENO® Zr

... is the trademark used for the zirconium oxide discs of the ZENO® Tec system

This material is often referred to as ceramic steel because of its high tensile strength. Furthermore, the use of zirconium oxide virtually eliminates the risk of negative reactions in allergy-sufferers.

The material is not an electrical conductor and therefore does not generate an electrical charge.

ZENO® Zr provides ideal protection against the unpleasant effects of heat and cold. Since the material is non-metallic, there is no danger of corrosion.

Case study

by Dr. Urs Brodbeck, Zürich

The 10 unit zirconium oxide substructure (**ZENO® Zr**) during the try-in



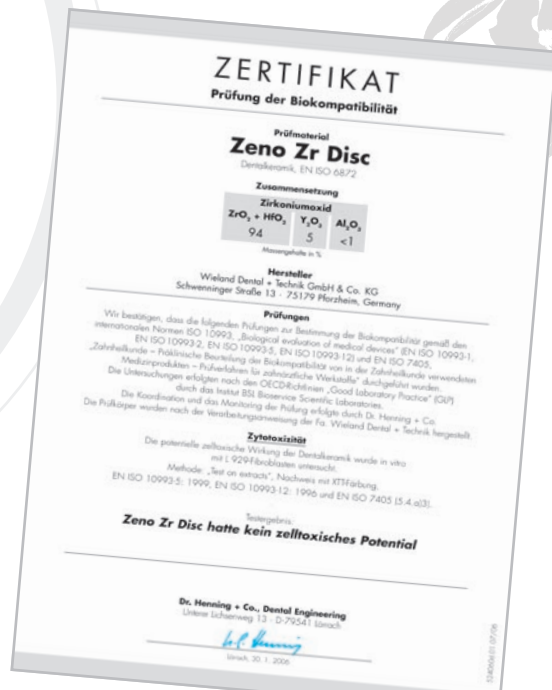
The veneered restoration in situ after the final fitting

Application

In addition to their use in dentistry, aluminium oxide and zirconium oxide have been in use as materials for hip replacements for over twenty years. These materials are fully biocompatible because they consist mainly of minerals which are also found in natural bone tissue. This means that they are the closest materials available to natural bone.

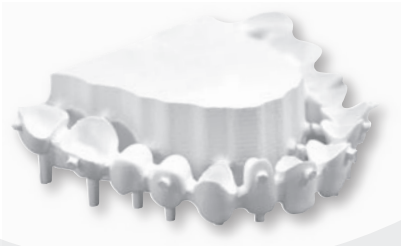
Safety and reliability

Clinical studies and material research prove that the use of zirconium oxide ensures safe, long-lasting and physically stable dental restorations.



CAD/CAM in dentistry

It is only in recent years that computer aided manufacturing has enabled this high-end material to be processed on such an individual basis that it can also be used for dental restorations. The automated processes now available guarantee consistently high standards of quality.



■ CAD

CAD stands for **C**omputer **A**ided **D**esign. This is in effect a kind of “electronic drawing board”.

■ CAM

CAM stands for **C**omputer **A**ided **M**anufacturing. In this case, this involves calculating the numerical data (cutting paths) required by a milling machine and passing this data on to the control system. The dental structures cut from a blank in the milling machine are then fired in a furnace to make the framework for the crown or bridge work.

Advantages of zirconium oxide

- Low thermal conductivity
- No dark gum lines or discoloration of the gingiva
- Zirconium oxide has better translucence than metal. The natural effect of the dentures remains the same in a variety of lighting conditions, such as daylight or artificial light.



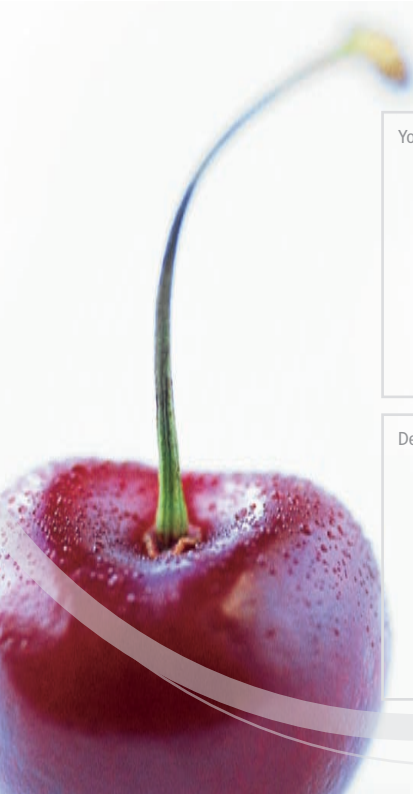
Why do these dentures look so natural?

The ceramic substructure is coated with a so-called veneering ceramic which is painstakingly built up by the dental technician to match the appearance and shade of the individual patient's natural teeth. The result is a full-ceramic tooth that only an expert can distinguish natural dentition. In order to protect the opposing teeth, the veneering ceramic is softer than the supporting substructure. The substructure itself would be too hard.

The veneering ceramic is supplied as a powder and is mixed with a special liquid and applied with a brush. It comes in a variety of colours. However, these are only intended as an aid to the dental technician, so that he or she knows which material is being used for each layer.



In order to lend an artificial tooth a natural appearance, it is necessary to use a number of different ceramic materials to provide various shades of white and differing degrees of brightness. When the layers of ceramic powder have been built up, the restoration is baked in a furnace and the colours disappear. The crown is then left with different degrees of brightness and shades of white and the overall effect is a denture that perfectly matches your natural teeth. The finished restoration is then fitted by your dentist.



Your individual restoration created by:

Dental care provided by:

ZENO[®]
Tec System

WIELAND
Dental Division

WIELAND Dental + Technik
GmbH & Co. KG
Schwenninger Straße 13
75179 Pforzheim, Germany

Fon +49 72 31/37 05-0
Fax +49 72 31/35 79 59

www.wieland-international.com
info@wieland-international.com

530063e.02.01/07